



1715/22-24 Dorcas Street Southbank VIC

1  1  1 

Low maintenance and chic, this one bedroom abode located in the sought after Elm Building will provide you with the idyllic inner city Melbourne lifestyle. Comprising:

- Video Intercom Entry and Lift Access
- Open plan living area with floor to ceiling windows
- Good sized contemporary kitchen with stainless steel appliances and stone benches
- Dedicated built in study nook
- Bedroom with built in robes
- Separate Bathroom
- European Laundry
- Undercover off street parking with remote access

Type : Apartment

View : <https://www.sortinoproperty.com.au/8564444>

[For full version visit the website](#)

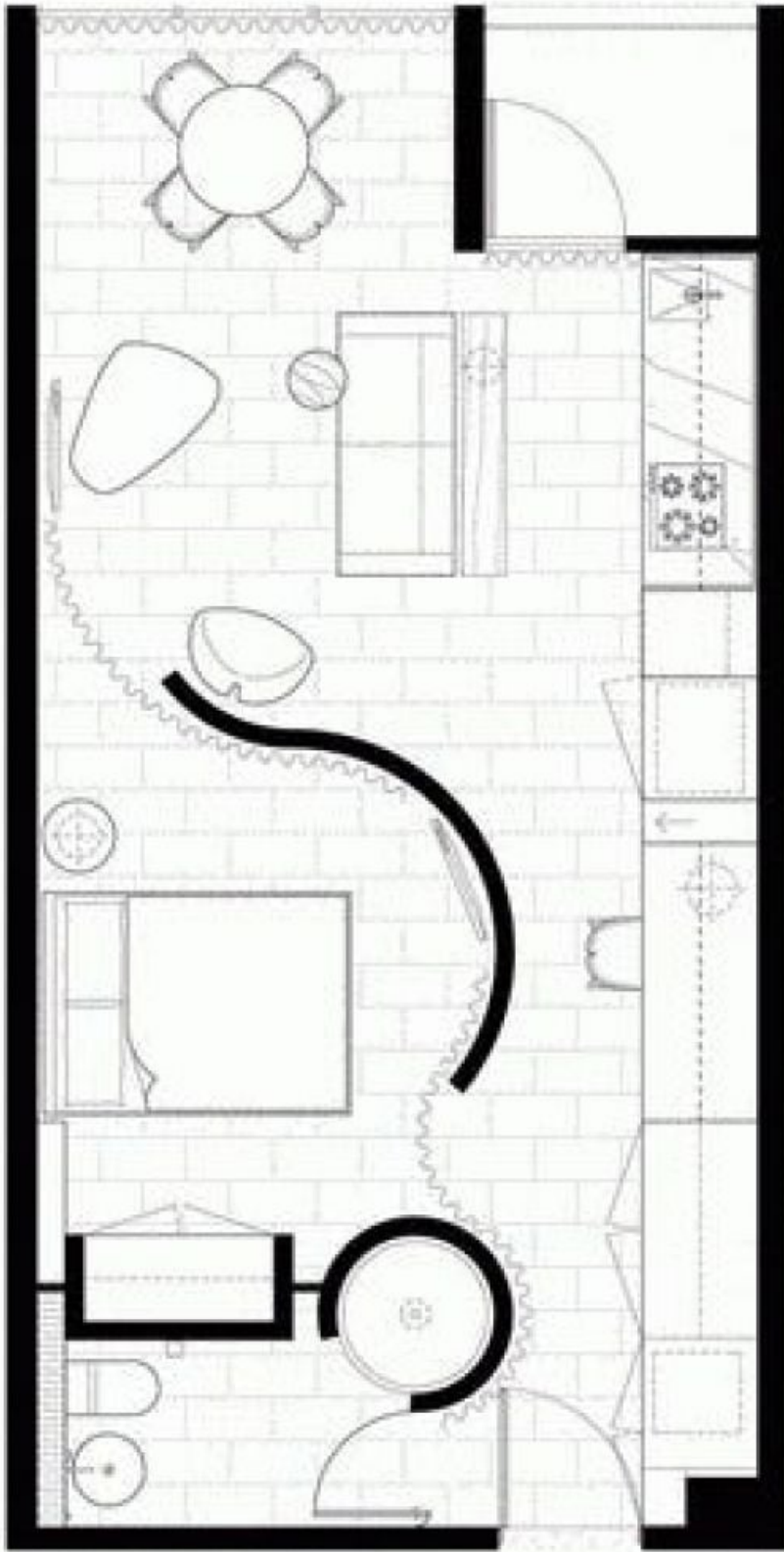


Figure 1. A floor plan of a house with a highlighted path.