



4 Roxby Close Eltham VIC

5 2 5

Welcome to your new home, nestled privately at the end of a small cul-de-sac. This large, family home has everything you need. With multiple living spaces, outdoor areas and climate comforts. Located opposite Woodridge Preschool and positioned between Eltham Primary, Our Lady Help of Christian School, Eltham High and Eltham East Primary School. With shops, buses, cafes and the train a 10 minute walk down the road, this home really couldn't get any better!

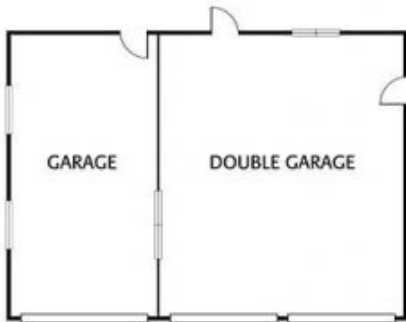
Featuring...

- 3 remote garage bays with work shop and under house storage
- Front entrance with key-less entry opening into formal

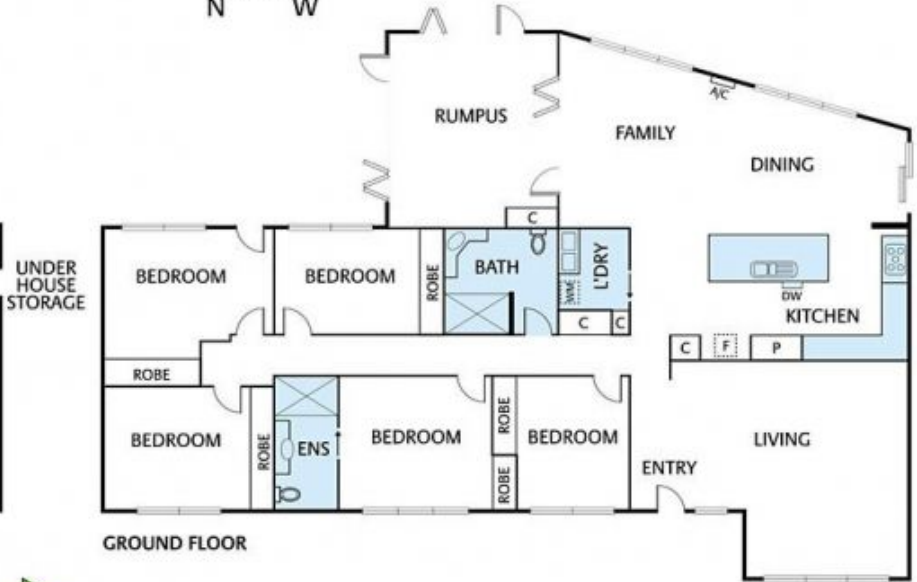
[For full version visit the website](#)

Type : House

View : <https://www.sortinoproperty.com.au/8564384>



LOWER GROUND FLOOR



GROUND FLOOR

