



147 Manningham Road Bulleen VIC

3 2 3

Packaging a prominent lifestyle position with spectacular city views, Comprising 3 large bedrooms (main with ensuite) and 2 spacious living areas this property is not to be missed. With a large backyard with mature gardens and large front yard with u shaped drive way.

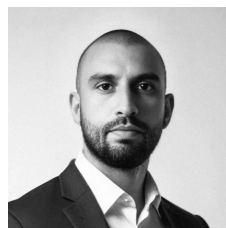
Type : House
Land Size : 800 sqm
View : <https://www.sortinoproperty.com.au/856435>
3

****Please note the garage is not for use****

Footsteps to Bulleen Plaza and city-bound bus services

Offering convenient access to excellent public and private schools including St Clements of Rome Primary and Marcellin College. Close to Macedon Square shops and cafes, Templestowe Village, Westfield Shoppingtown.

[For full version visit the website](https://www.sortinoproperty.com.au)



Joe Sortino
03 9421 5525