



17 Shipwright Parade Werribee VIC

4 2 2

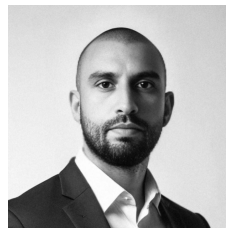
Situated in the ever popular Harpley Estate surrounded by parklands and walking trails and within close proximity to local schools, shops and all public transport including bus stop within a few minute walk plus soon to open easy freeway access, with the centre of Werribee only a 10 minute drive.

Welcome to modern luxury and comfort at its finest! 17 Shipwright Parade is the perfect family home offering contemporary living in a serene neighborhood. This stunning residence features:

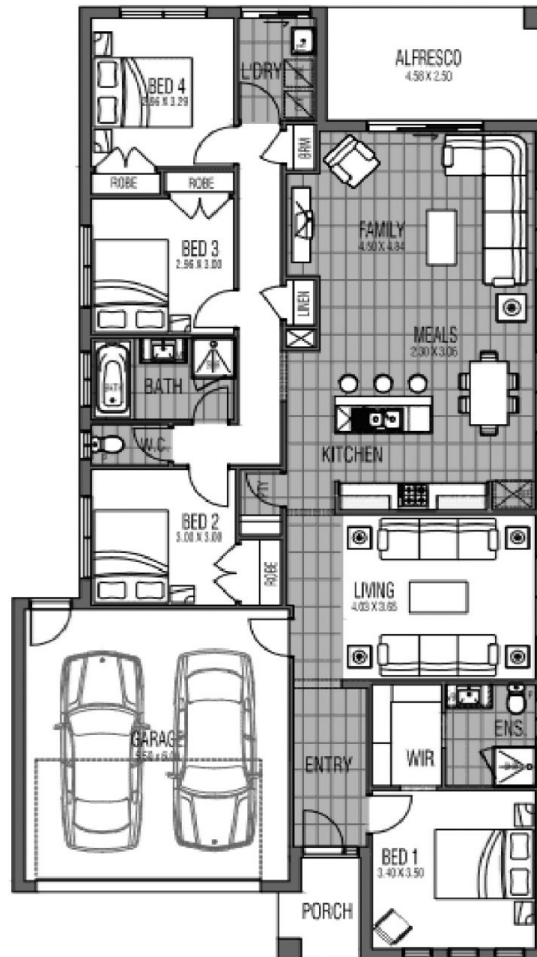
Key Features:

[For full version visit the website](https://www.sortinoproperty.com.au)

Type : House
Building Size : 151 sqm
Land Size : 357 sqm
View : <https://www.sortinoproperty.com.au/8564290>



Joe Sortino
03 9421 5525



TOTAL AREA (including Garage & Alfresco) 206.72 SqM 22.25 SQ's
 OVERALL HOUSE LENGTH 21.00 M
 OVERALL HOUSE WIDTH 11.10 M

This floor plan including furniture, fixture measurements and dimensions are for illustrative purposes only. Investors Choice Property gives no guarantee, warranty or representation as to the accuracy and layout.