



## 9 Stonehenge Drive Cobblebank VIC

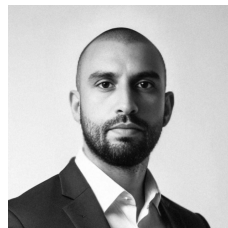
3 2 1

Investors Choice Property is proud to present this stunning home in a prime location at the heart of Cobblebank. Your search could be over if its something special you have been waiting for. Located suitably within close proximity to some beautiful parklands and quality schools ( primary and secondary), local shops/businesses as well public transport options like bus stops or train stations - not to mention easy access to the Western Highway.

The interior design features 3 spacious bedrooms with 2 bathrooms and an open plan living space that embraces a modern living style with plenty of light. In addition to this modern feel the master bedroom includes an ensuite bathroom as well as having ample room for storage or

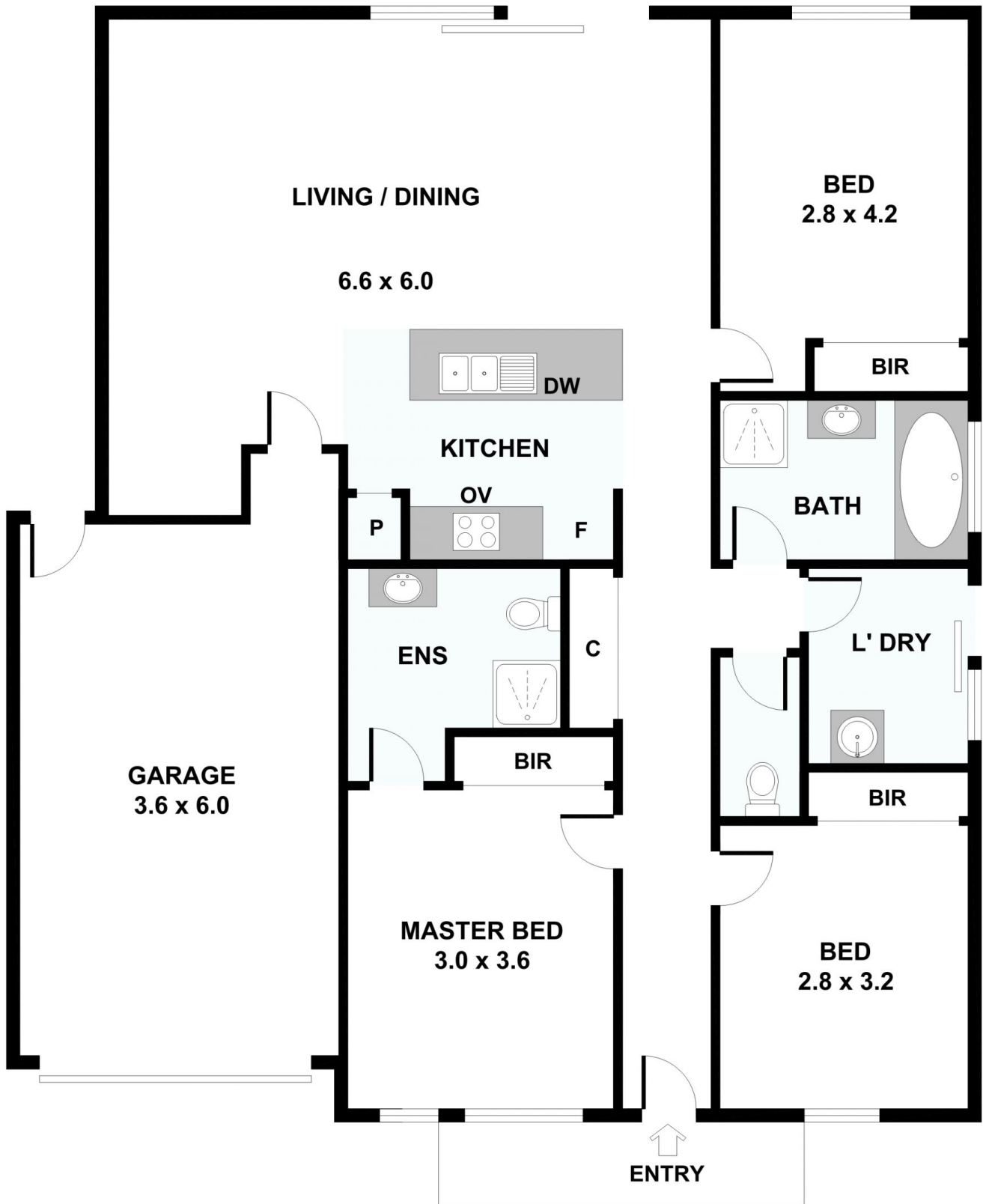
[For full version visit the website](https://www.sortinoproperty.com.au)

**Type** : House  
**Building Size** : 148 sqm  
**Land Size** : 303 sqm  
**View** : <https://www.sortinoproperty.com.au/8564275>



**Joe Sortino**  
03 9421 5525

# 9 Stonehenge Drive, Cobblebank



Please note: All stated dimensions are approximate only. Particulars given are for general information only and do not constitute any representation on the part of the vendor or agent.

